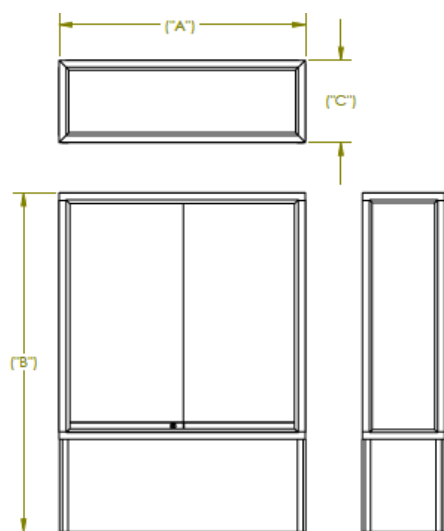


104xx Series Challenger Floor Case Collection



	"A"	"B"	"C"		"A"	"B"	"C"
10404	48"	66"	16"	10408 (2 4' Units)	96"	66"	16"
10405	60"	66"	16"	10410 (2 5' Units)	120"	66"	16"
10406	72"	66"	16"	10412 (2 6' Units)	144"	66"	16"

Shelving:

- 6 Half-Size Shelves
 - 4' Shelf Dimensions: 22" x 12" x 1/4" 12 Shelves on the 8' Unit
 - 5' Shelf Dimensions: 28" x 12" x 1/4" 12 Shelves on the 10' Unit
 - 6' Shelf Dimensions: 34" x 12" x 1/4" 12 Shelves on the 12' Unit
- The case utilizes a standard for shelf adjustments in 1" increments.
- Each shelf has a capacity of 25 lbs.

Doors:

- Sliding doors that open from both sides for easy access. Flush mount handles are supplied.
- Lock mechanism is an arch lock that comes with 2 keys.

Lighting:

- Not available on the standard unit.

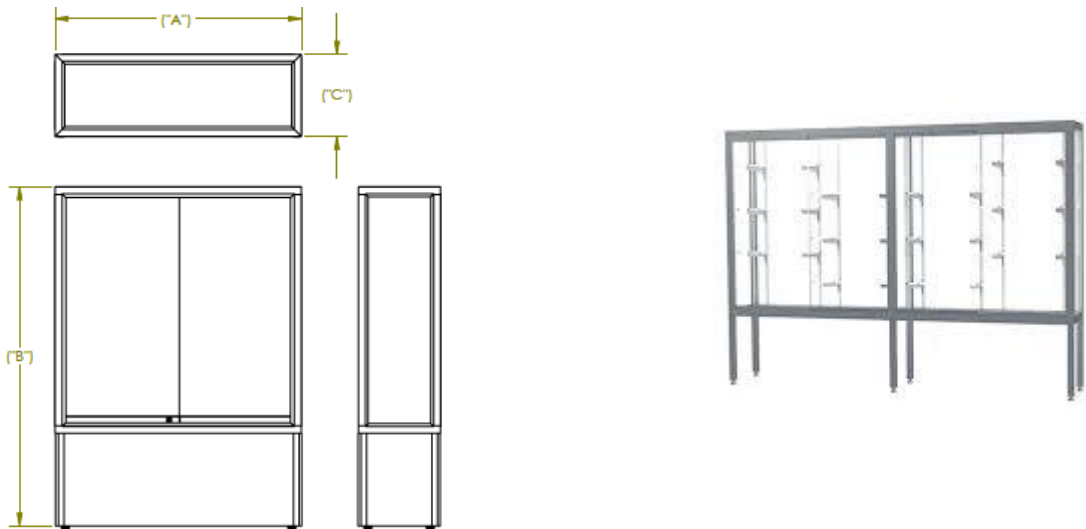
Materials:

- Case frame is made of satin anodized aluminum.
- Cases are available with a variety of back options including custom printed options.

Assembly/Weight/Shipping:

- Cases arrive semi-assembled. Installers will need to unpack/untape the unit, install the shelves, install the door handles, and level the case. Tip protection is also provided and must be installed to meet furniture tip over requirements.
- Cases vary from 350 to 450 lbs.
- Cases will arrive on a pallet shrink-wrapped and packaged for safe arrival.

114xx Series Challenger Floor Case Collection



	"A"	"B"	"C"		"A"	"B"	"C"
10404	48"	66"	16"	10408 (2 4' Units)	96"	66"	16"
10405	60"	66"	16"	10410 (2 5' Units)	120"	66"	16"
10406	72"	66"	16"	10412 (2 6' Units)	144"	66"	16"

Shelving:

- 6 Half-Size Shelves
 - 4' Shelf Dimensions: 22" x 12" x 1/4" 12 Shelves on the 8' Unit
 - 5' Shelf Dimensions: 28" x 12" x 1/4" 12 Shelves on the 10' Unit
 - 6' Shelf Dimensions: 34" x 12" x 1/4" 12 Shelves on the 12' Unit
- The case utilizes a standard for shelf adjustments in 1" increments.
- Each shelf has a capacity of 25 lbs.

Doors:

- Sliding doors that open from both sides for easy access. Flush mount handles are supplied.
- Lock mechanism is an arch lock that comes with 2 keys.

Lighting:

- Not available on the standard unit.

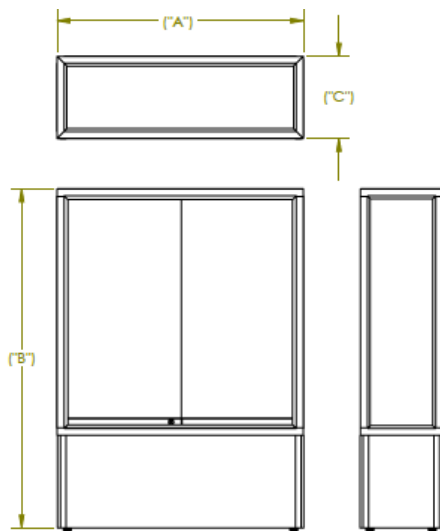
Materials:

- Case frame is made of satin anodized aluminum.
- Cases are available with a variety of back options including custom printed options.

Assembly/Weight/Shipping:

- Cases arrive semi-assembled. Installers will need to unpack/untape the unit, install the shelves, install the door handles, and level the case. Tip protection is also provided and must be installed to meet furniture tip over requirements.
- Cases vary from 350 to 450 lbs.
- Cases will arrive on a pallet shrink-wrapped and packaged for safe arrival.

134xx Series Challenger Floor Case Collection



	"A"	"B"	"C"
13404	48"	66"	16"
13405	60"	66"	16"
13406	72"	66"	16"

Shelving:

- 6 Half-Size Shelves
 - 4' Shelf Dimensions: 22" x 12" x 1/4"
 - 5' Shelf Dimensions: 28" x 12" x 1/4"
 - 6' Shelf Dimensions: 34" x 12" x 1/4"
- The case utilizes a standard for shelf adjustments in 1" increments.
- Each shelf has a capacity of 25 lbs.

Doors:

- Sliding doors that open from both sides for easy access. Flush mount handles are supplied.
- Lock mechanism is an arch lock that comes with 2 keys.

Lighting:

- Not available on the standard unit.

Materials:

- Case frame is made of satin anodized aluminum.
- Cases are available with a variety of back options including custom printed options.

Assembly/Weight/Shipping:

- Cases arrive semi-assembled. Installers will need to unpack/untape the unit, install the shelves, install the door handles, and level the case. Tip protection is also provided and must be installed to meet furniture tip over requirements.
- Cases vary from 350 to 450 lbs.
- Cases will arrive on a pallet shrink-wrapped and packaged for safe arrival.