

# Waddell Wall Mounting Kit Instructions



## Required Tools:

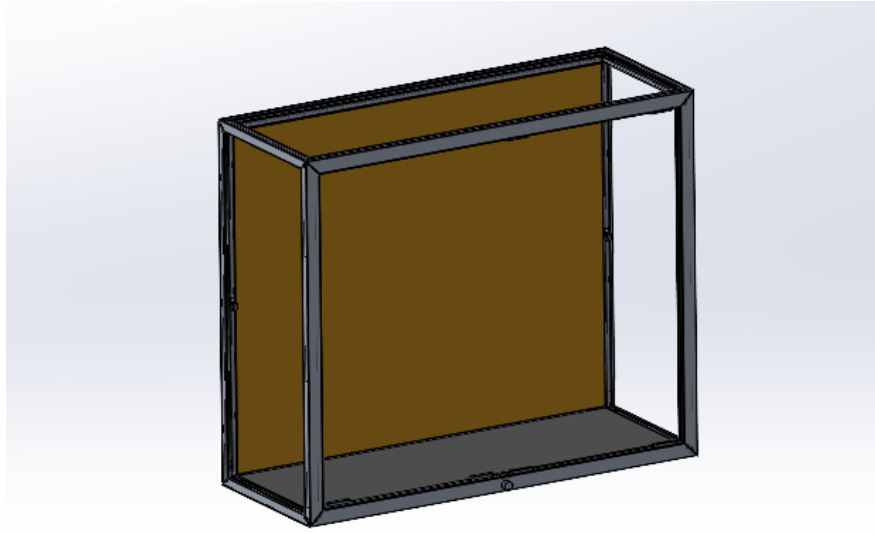
- #2 Phillips bit
- 7/64" Drill Bit
- Drill
- Level
- Straight edge
- Wall Anchor Hardware

## Included Items:

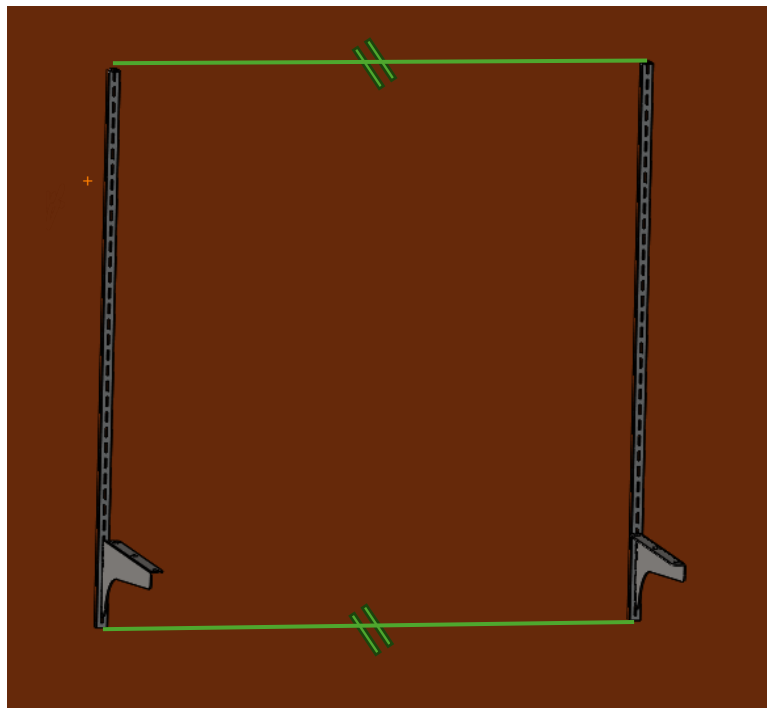
- A. #8 x 2-1/2" Long, Flat Head Screws
- B. #6 x 3/8" Long, Pan Head Screws
- C. Standards
- D. Left Hand Bracket
- E. Right Hand Bracket
- F. Center Bracket
- G. Top Clips

**Notice:** It is strongly recommended to have at least two individuals for the safe and efficient installation of this case

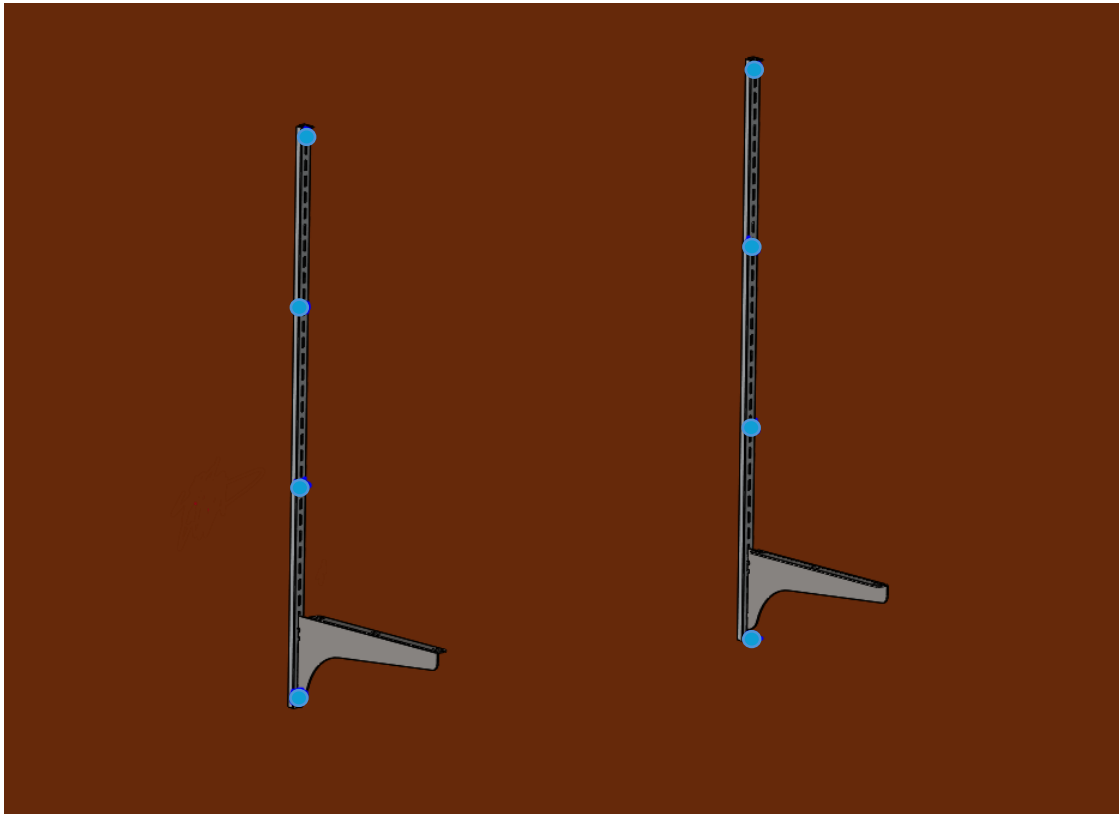
1. Begin by removing all doors, shelves, and shelf brackets from the case.
  - a. In order to remove the doors from the display case, first unlock the doors and position the doors in the center of the display area.
  - b. Next, starting with the outer most door lift up on the glass then tilt the bottom out of the case. Remove the door and set aside in a safe position. Repeat for the second door.



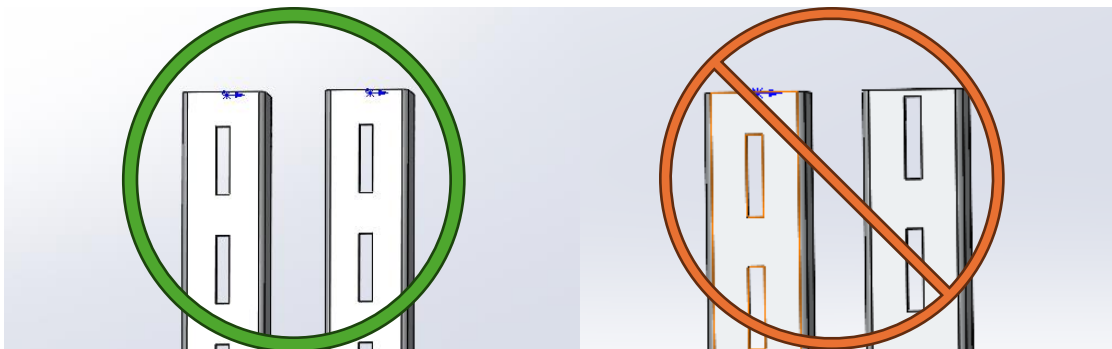
2. The top of the standards (C) will be even with the top of the case when installed properly.  
Standards should be mounted to be flush with the edge of the case.



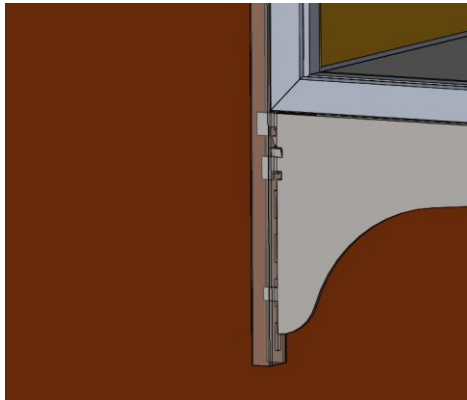
3. Securely attach the standards to the wall using appropriate hardware suitable for the wall's construction. For walls built with 2x4 framing, use the provided stud screws (A). Refer to local building codes for guidance on hardware suitable for other types of wall construction.



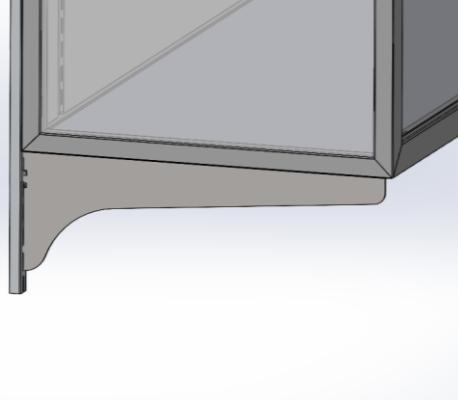
Note: Ensure that the standards are facing the same direction.



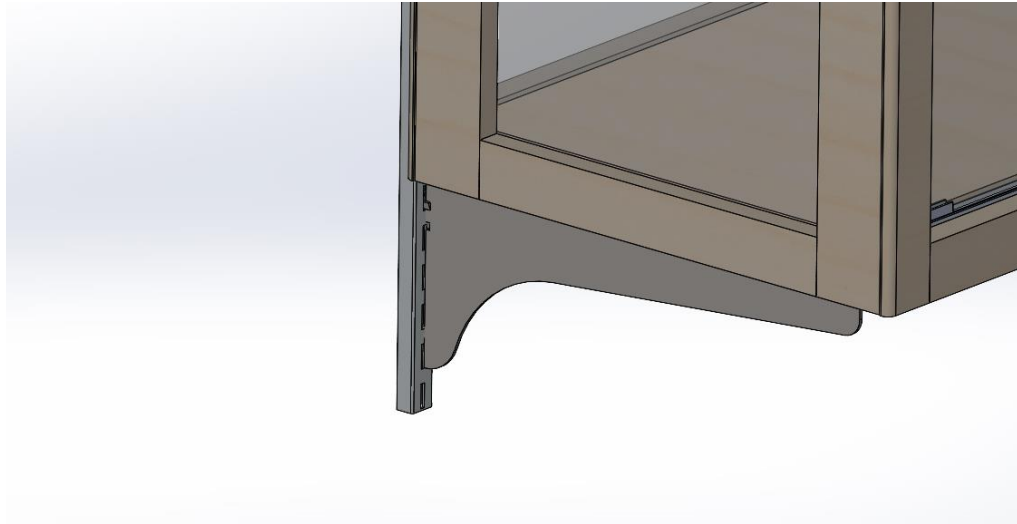
4. Position case brackets (**D,E,F**) in standards. Place the bracket hooks in 2<sup>nd</sup>, 5<sup>th</sup>, and 6<sup>th</sup> slots from the bottom.



^2282

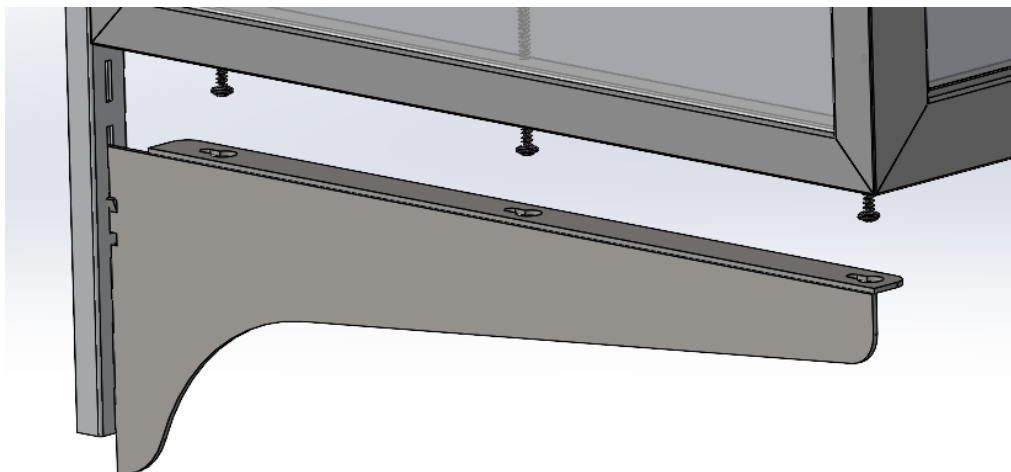


^2040

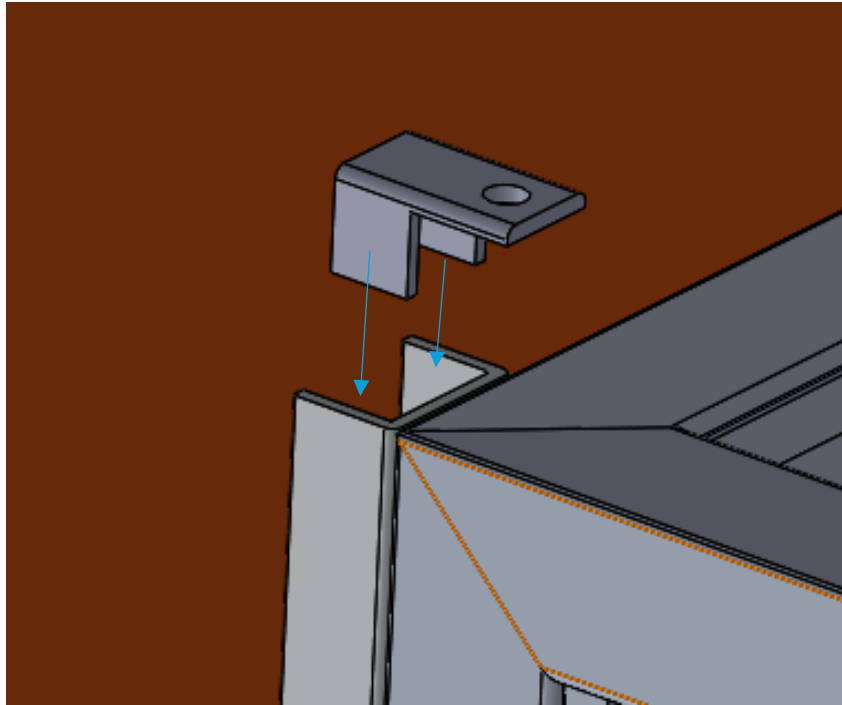


^849

5. Screws are pre-installed, loosen them enough to latch onto the bracket, once they are mounted on the standards.



6. Install the provided clips (**G**) for the top of the case. These clips should slide behind the standards, with the hole in the clip positioned over the case and ready for the provided screw. Use a 7/64" Drill bit to predrill the holes in the frame of the display case, careful not to drill more than necessary. Ensure the case is firmly against the standards before driving the screws (**B**).



7. Tighten all screws both in top and bottom brackets. The case is now installed and ready for locating shelf brackets and positioning shelves and doors.

