

1400/1600 IS CAPPED AGAINST WALL OPENING

BOX SIDE

BOX BACK

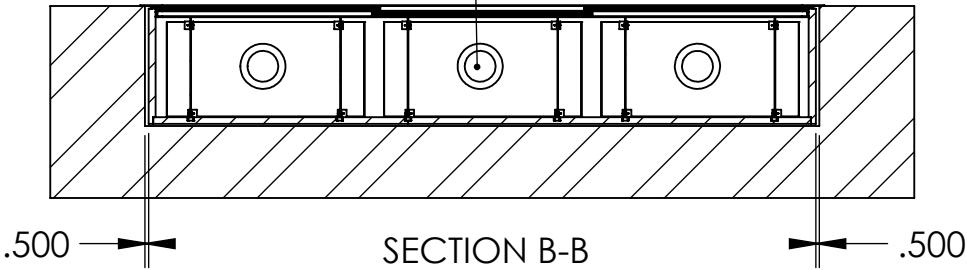
120V, 4" LED CAN RECESS LIGHT
DRIVER BOX MOUNTED ON TOP OF BOX
OR
120V LED TUBE LIGHT
CONTINUOUS TUBE LIGHT ON TOP OF CASE

BOX SURFACE OPTIONS:

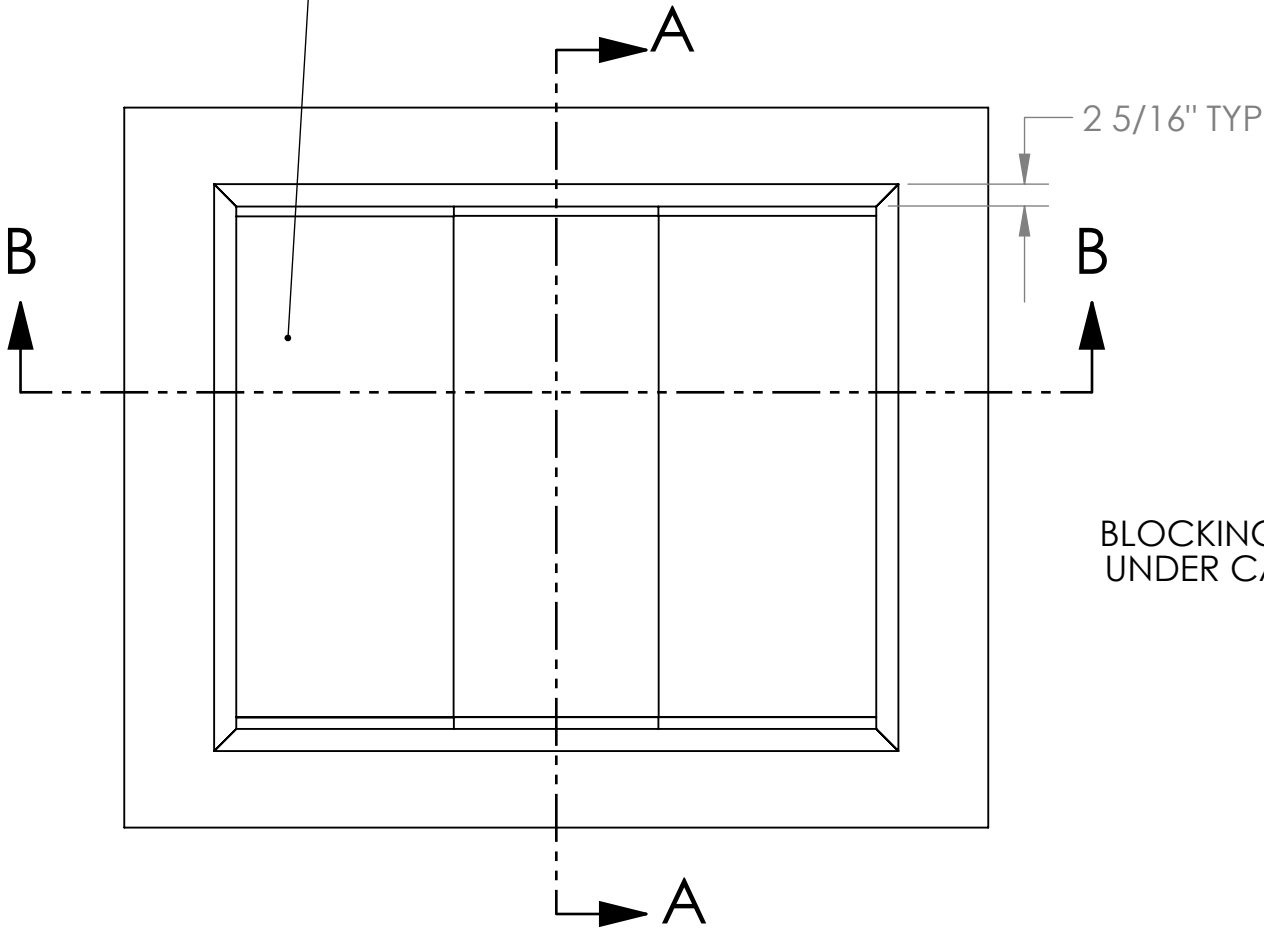
- NATURAL CORK
- HIGH PRESSURE LAMINATE
- WOOD STAIN FINISH (BIRCH)
- TACKABLE FABRIC
(FR701, TIER 1, TIER 2)
- PREMATAK VINYL
- FORBO CORK

BOX BOTTOM

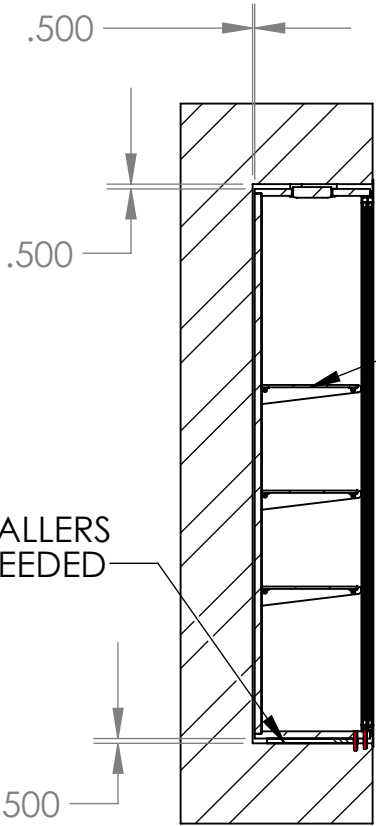
RATCHET LOCKS OR PLUNGER LOCKS



SHOWN AS MINIMALLY FRAMED SLIDING DOORS WITH
1/4" CLEAR TEMPERED GLASS (1400),
ALSO OPTION FOR FULLY FRAMED SLIDING DOOR WITH
3/16" CLEAR TEMPERED GLASS (1600)



BLOCKING BY INSTALLERS
UNDER CASE AS NEEDED



SECTION A-A
SCALE 1 : 20

1/4" OR 3/8" CLEAR TEMPERED GLASS SHELVES ON
STANDARDS AND BRACKETS SHOWN
(CAN ALSO PROVIDE HANGING SHELF/CABLE HARDWARE
WITH 3/8" CLEAR TEMPERED GLASS)

THE INFORMATION CONTAINED IN THIS DRAWING
IS THE SOLE PROPERTY OF GHENT. ANY
REPRODUCTION IN PART OR AS A WHOLE
WITHOUT THE WRITTEN PERMISSION OF GHENT
IS PROHIBITED.

GMI
companies.

2999 HENKLE DRIVE, LEBANON, OHIO, 45036

UNLESS SPECIFIED OTHERWISE:
DIMENSIONS ARE IN INCHES

DIMENSIONS .XXX

ANGULAR
±2°

DRAWN BY JPB

DATE REV A

SCALE: 1:16

MATERIAL

FINISH

TITLE

SPMD-REC-(MF/FF)

SIZE

DWG. NO.

B

1400/1600 SPECS

SHEET 1 OF 4